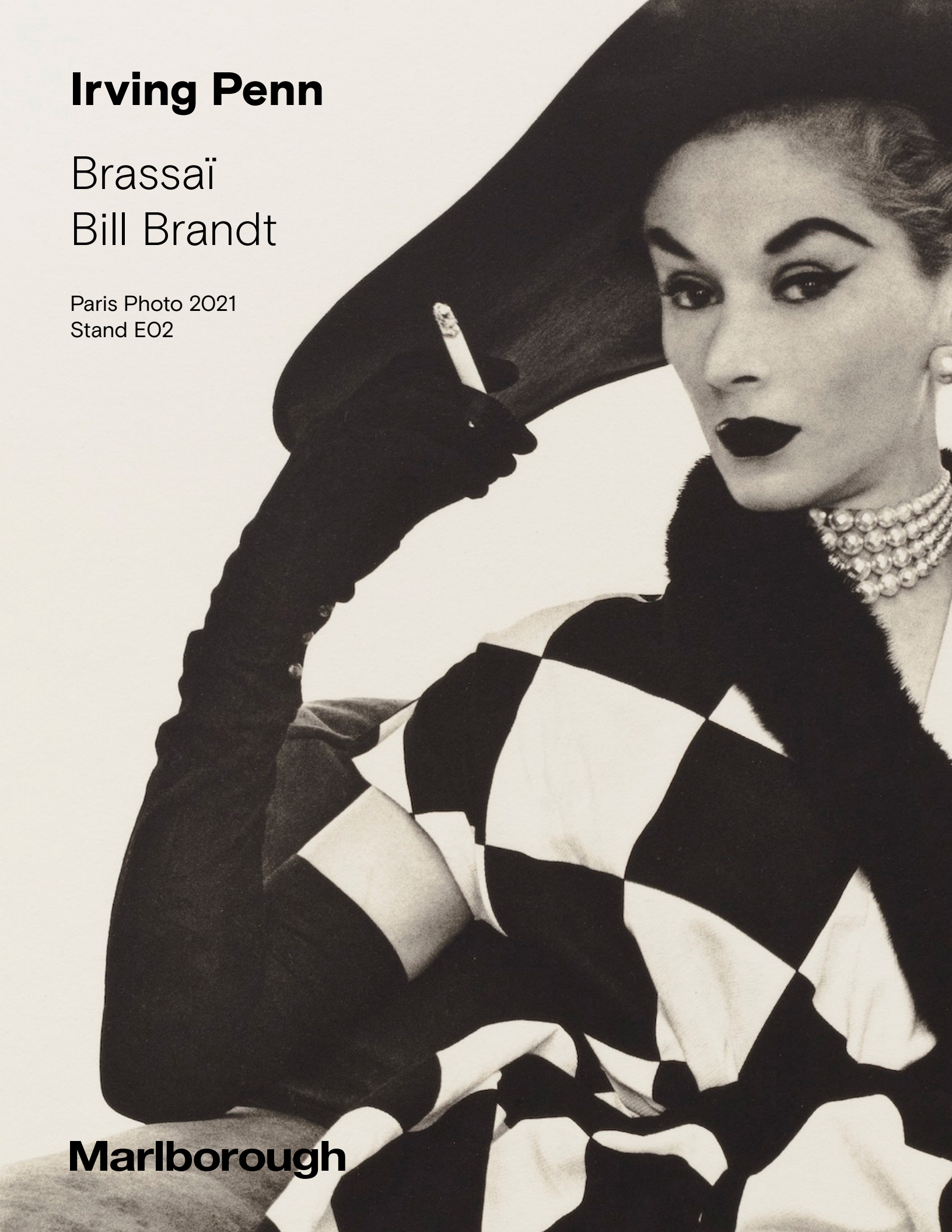


Irving Penn

Brassaï

Bill Brandt

Paris Photo 2021
Stand E02



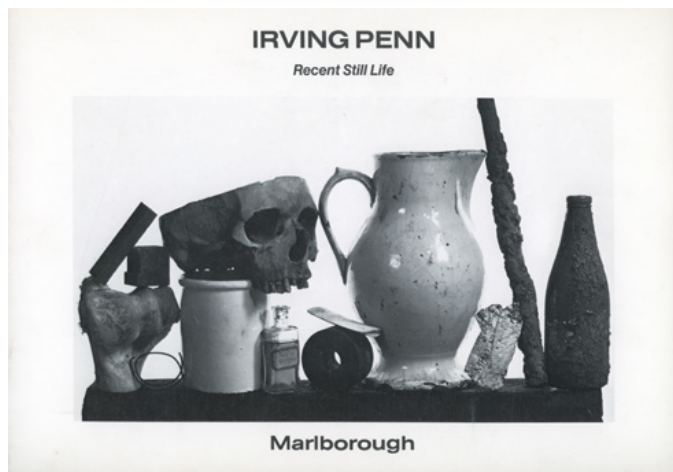
Marlborough

Irving Penn

Brassaï

Bill Brandt

For the 2021 edition of Paris Photo, Marlborough is pleased to present a group exhibition comprised of some of the most iconic images by three photographers: Irving Penn (1917–2009), Brassaï (born Gyula Halász, 1899–1984), and Bill Brandt (1904–1983).



While each of these three artists share various stylistic and thematic similarities across their respective practices, we bring them together here to celebrate the brief, but critical, role Marlborough played in the 1970s and 80s as a pioneer at the forefront of exhibiting and selling photographs.

Many of the photographs on view have not been seen in some forty years since Penn's exhibitions with the gallery in 1977, 1980, 1981, and 1982, Brandt's in 1976 and 1981, and Brassaï's in 1976, 1979, 1982, and 1984.

Above: exhibition catalogue for 'Irving Penn: Recent Still Life,' Marlborough Gallery, New York, 1982.

Cover: Irving Penn, *Harlequin Dress* (Lisa Fonssagrives-Penn), 1950.

Irving Penn





Cocoa Dress (Balenciaga), Lisa Fonssagrives-Penn
Photographed in Paris, 1950
Print made June 1979
Rives paper on aluminum, platinum-palladium, ed. 15/50
Image: 49.2 x 48.9 cm (19 3/8 x 19 1/4 in.)
Framed: 69.9 x 69.2 cm (27 1/2 x 27 1/4 in.)



Mermaid Dress (Rochas), Lisa Fonssagrives-Penn
Photographed in Paris, 1950
Print made June 1979
Rives paper on aluminum, platinum-palladium, ed. 5/25
Image: 49.5 x 49.5 cm (19 1/2 x 19 1/2 in.)
Framed: 71.1 x 69.9 cm (28 x 27 1/2 in.)



Harlequin Dress (Lisa Fonssagrives-Penn)

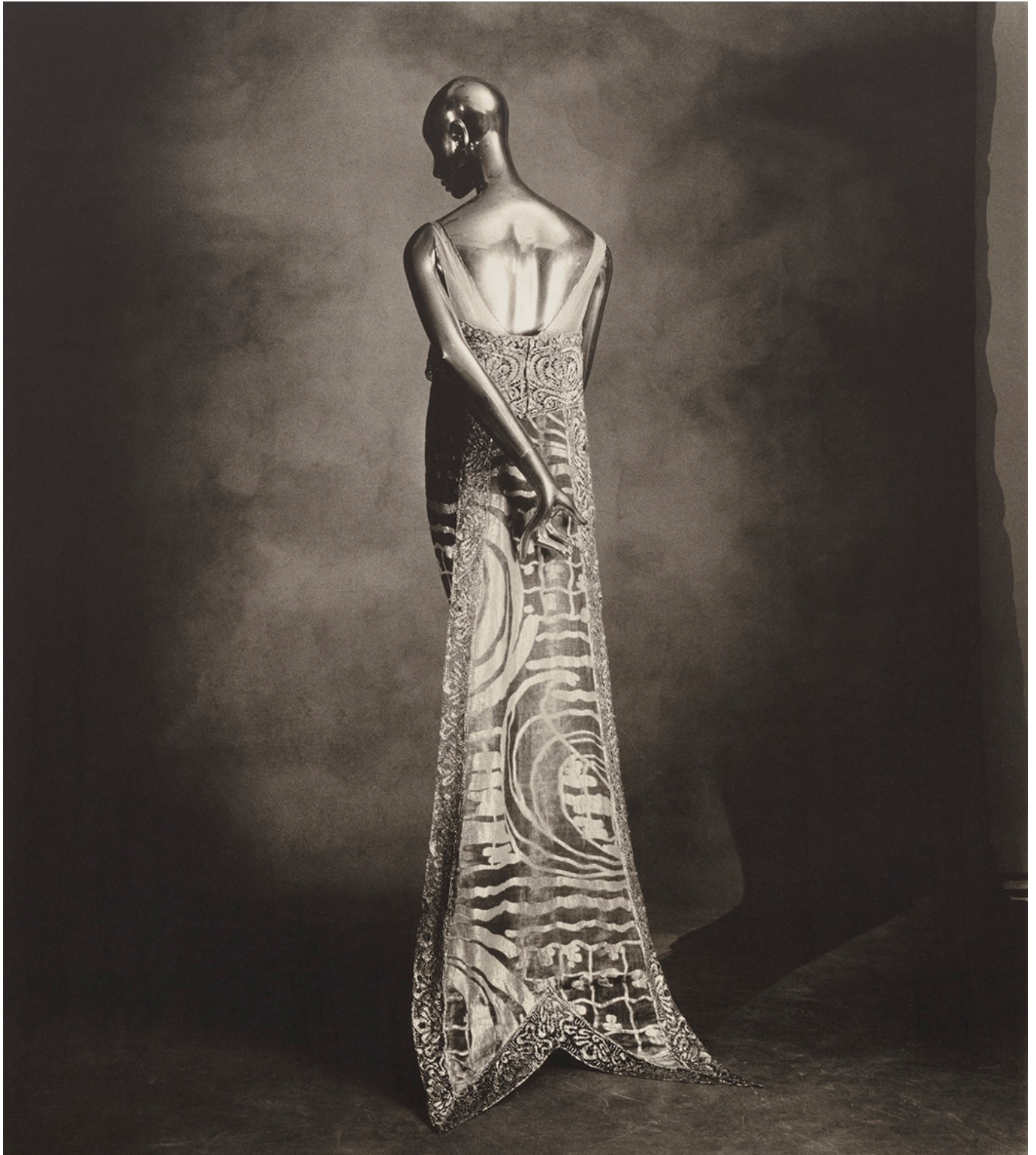
Photographed in New York, 1950

Print made March 1979

Rives paper on aluminum, platinum-palladium, ed. 13/30

Image: 52.1 x 50.2 cm (20 1/2 x 19 3/4 in.)

Framed: 71.1 x 67.9 cm (28 x 26 3/4 in.)



Callot Swallowtail Dress

Photographed in New York, 1974

Print made March 1978

BF paper on aluminum, platinum-palladium, ed. 11/19

Image: 51.8 x 45.7 cm (20 3/8 x 18 in.)

Framed: 72.4 x 66 cm (28 1/2 x 26 in.)



Chanel Sequined Suit

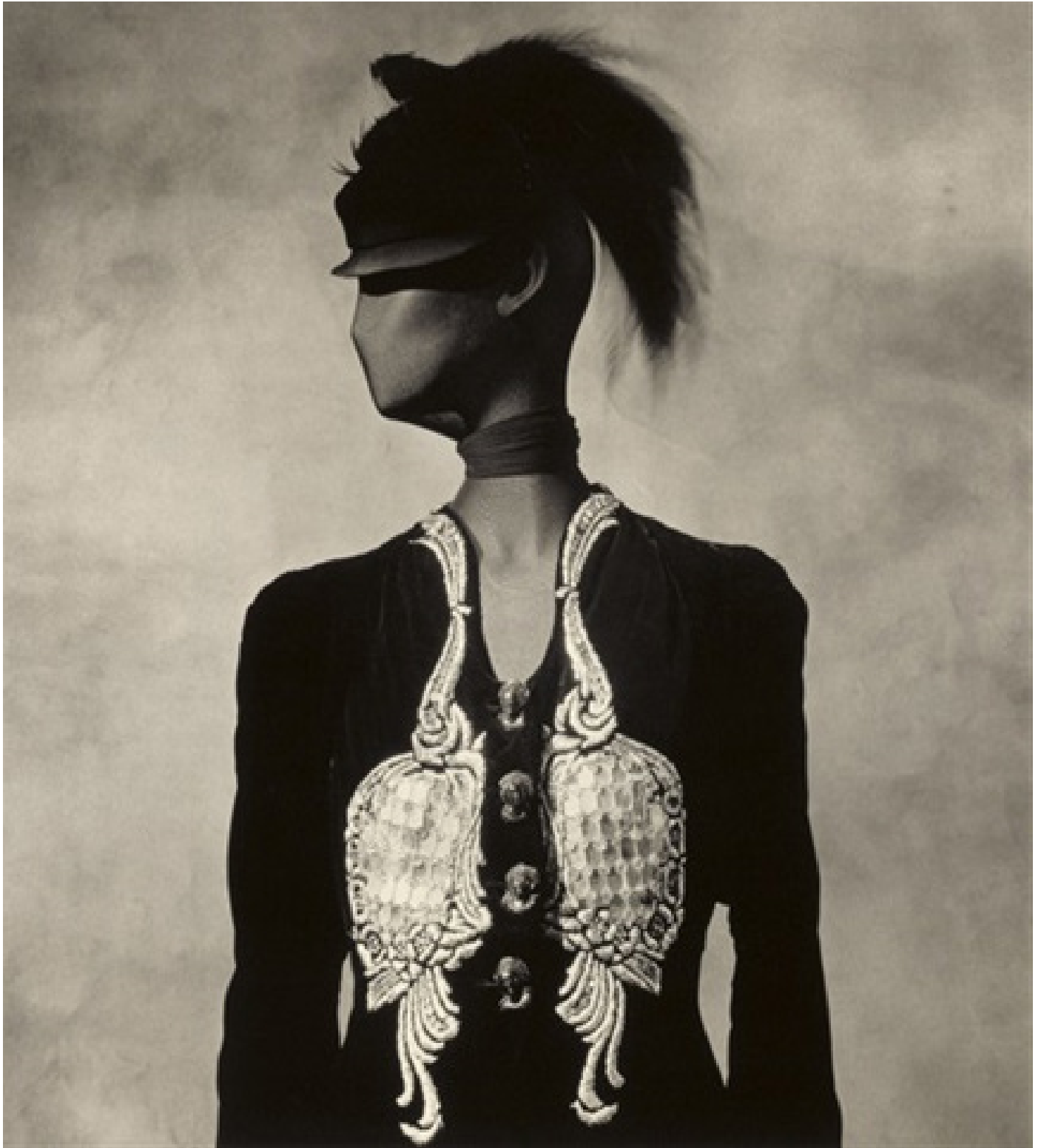
Photographed in New York, 1974

Print made June 1979

Rives paper on aluminum, platinum-palladium, ed. 6/29

Image: 52.1 x 47.6 cm (20 1/2 x 18 3/4 in.)

Framed: 73 x 67.6 cm (28 3/4 x 26 5/8 in.)



Schiaparelli Jacket with Tinsel and Glass

Photographed in New York, 1974

Print made January 1979

Rives paper on aluminum, platinum-palladium, ed. 15/25

Image: 49.5 x 46.4 cm (19 1/2 x 18 1/4 in.)

Framed: 70.5 x 66.7 cm (27 3/4 x 26 1/4 in.)



Vionnet Back Tie

Photographed in New York, 1974

Print made March 1978

BF paper on aluminum, platinum-palladium, ed. 10/15

Image: 39.4 x 39.4 cm (15 1/2 x 15 1/2 in.)

Framed: 73.3 x 72.1 cm (28 7/8 x 28 3/8 in.)



Vionnet Dress with Fan

Photographed in New York, 1974

Print made December 1978

Rives paper on aluminum, platinum-palladium, ed. 25/37

Image: 53.3 x 49.5 cm (21 x 19 1/2 in.)

Framed: 74.3 x 69.9 cm (29 1/4 x 27 1/2 in.)



Vionnet Hipline

Photographed in New York, 1974

Print made July 1978

Rives paper on aluminum, platinum-palladium, ed. 8/8

Image: 40.6 x 40 cm (16 x 15 3/4 in.)

Framed: 67 x 65.4 cm (26 3/8 x 25 3/4 in.)



Vionnet Lampshade Dress

Photographed in New York, 1974

Print made March 1978

BF paper on aluminum, platinum-palladium, ed. 3/15

Image: 38.1 x 37.5 cm (15 x 14 3/4 in.)

Framed: 70.5 x 68.6 cm (27 3/4 x 27 in.)



Vionnet Long Robe

Photographed in New York, 1974

Print made July 1978

Rives paper on aluminum, platinum-palladium, ed. 3/25

Image: 38.1 x 37.8 cm (15 x 14 7/8 in.)

Framed: 67 x 65.1 cm (26 3/8 x 25 5/8 in.)

Brassai





Au Monocle, le bar, à gauche: Lulu de Montparnasse

Photographed in Paris, c. 1932-33

Print made c. 1975

Gelatin silver print on double-weight paper

Image: 25.7 x 20.5 cm (10 1/8 x 8 1/16 in.)

Framed: 41.9 x 35.9 cm (16 1/2 x 14 1/8 in.)



Kiki avec son accordéoniste, au Cabaret des fleurs, à Montparnasse

Photographed in Paris, c. 1932

Print made c. 1975

Gelatin silver print on double-weight paper

Image: 25.7 x 21 cm (10 1/8 x 8 1/4 in.)

Framed: 41.9 x 35.9 cm (16 1/2 x 14 1/8 in.)



'Bijou' au bar de la Lune, Montmartre
Photographed in Paris, 1932
Print made c. 1975
Gelatin silver print on double-weight paper
Image: 34.3 x 26 cm (13 1/2 x 10 1/4 in.)
Framed: 50.8 x 41.3 cm (20 x 16 1/4 in.)



Chez 'Suzy', la presentation

Photographed in Paris, c. 1932-33

Print made c. 1975

Gelatin silver print on double-weight paper

Image: 29.2 x 22.2 cm (11 1/2 x 8 3/4 in.)

Framed: 45.1 x 37.8 cm (17 3/4 x 14 7/8 in.)



La toilette dans un hôtel de passe, rue Quincampoix

Photographed in Paris, c. 1932

Print made c. 1975

Gelatin silver print on double-weight paper

Image: 19.5 x 27 cm (7 11/16 x 10 5/8 in.)

Framed: 35.6 x 42.2 cm (14 x 16 5/8 in.)



Armoire à glace dans un hôtel de passe, rue Quincampoix

Photographed in Paris, 1932

Print made c. 1975

Gelatin silver print on double-weight paper

Image: 34.9 x 27.5 cm (13 3/4 x 10 13/16 in.)

Framed: 50.8 x 42.9 cm (20 x 16 7/8 in.)



Bal du Magic-City, couples

Photographed in Paris, c. 1932

Vintage print (pre-1970)

Ferrottype gelatin silver print on single-weight paper

Image: 27.9 x 23.2 cm (11 x 9 1/8 in.)

Framed: 46 x 38.1 cm (18 1/8 x 15 in.)



La femme de l'homme gorille, dans sa danse de Loïe Fuller, place d'Italie

Photographed in Paris, 1933

Vintage print (pre-1970)

Ferrotypes gelatin silver print on single-weight paper

Image: 23.2 x 29.9 cm (9 1/8 x 11 3/4 in.)

Framed: 39.7 x 45.4 cm (15 5/8 x 17 7/8)



Couple fâché au bal des Quatre-Saisons, rue de Lappe, Paris

Photographed in Paris, c. 1932

Print made c. 1975

Gelatin silver print on double-weight paper

Image: 29.9 x 23.5 cm (11 3/4 x 9 1/4 in.)

Framed: 45.7 x 39.1 cm (18 x 15 3/4 in.)



Deux voyous de la bande du Grand Albert, quartier Italie

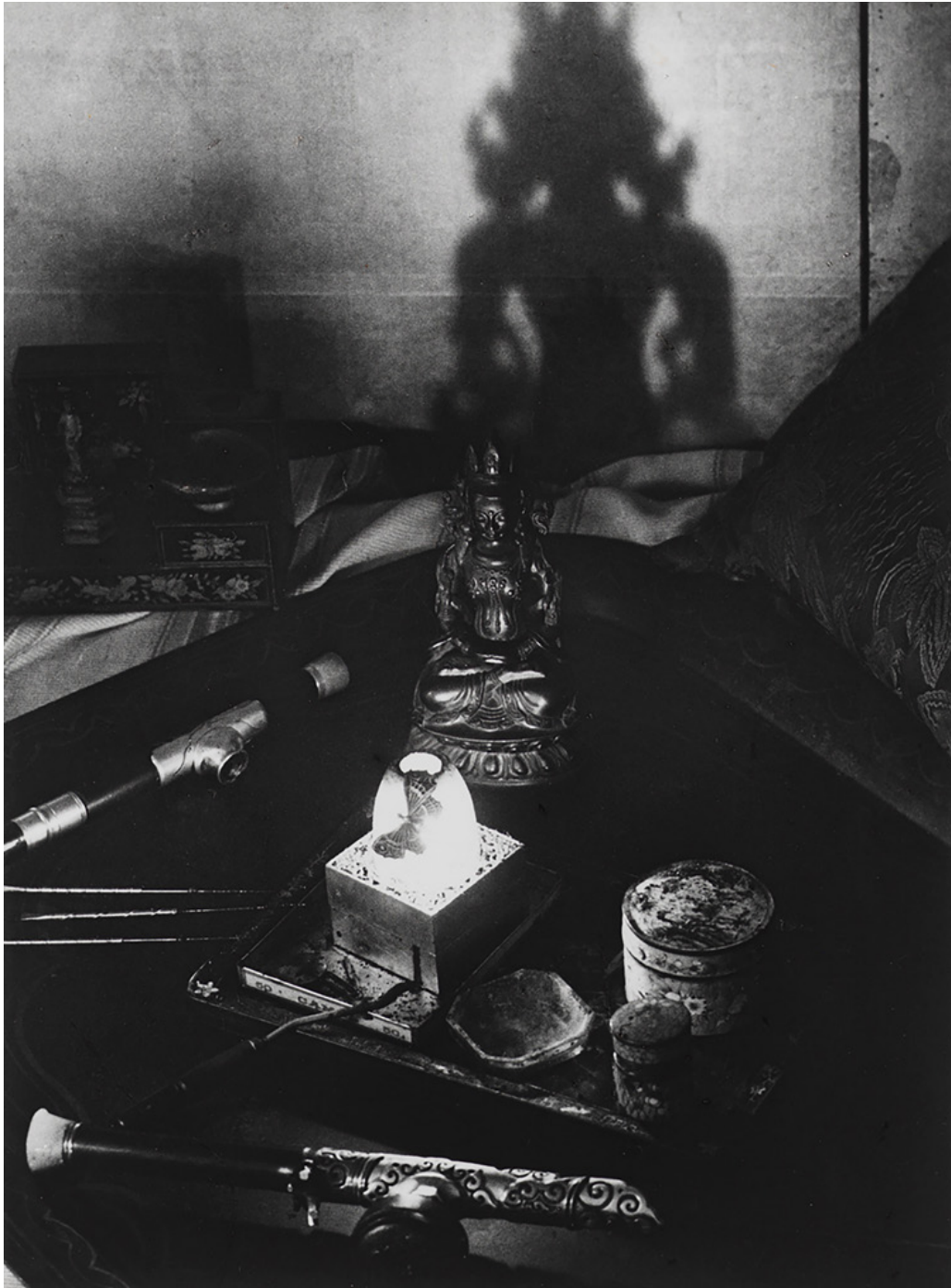
Photographed in Paris, 1932

Print made c. 1975

Gelatin silver print on double-weight paper

Image: 25.7 x 20 cm (10 1/8 x 7 7/8 in.)

Framed: 41.9 x 35.9 cm (16 1/2 x 14 1/8 in.)



Nature morte, une fumerie d'opium, avenue Bosquet, le plateau avec les pipes...

Photographed in Paris, 1931

Vintage print (pre-1970)

Ferrotypes gelatin silver print on single-weight paper

Image: 28.9 x 21.6 cm (11 3/8 x 8 1/2 in.)

Framed: 44.8 x 37.1 cm (17 5/8 x 14 5/8 in.)



Le parvis de Notre-Dame

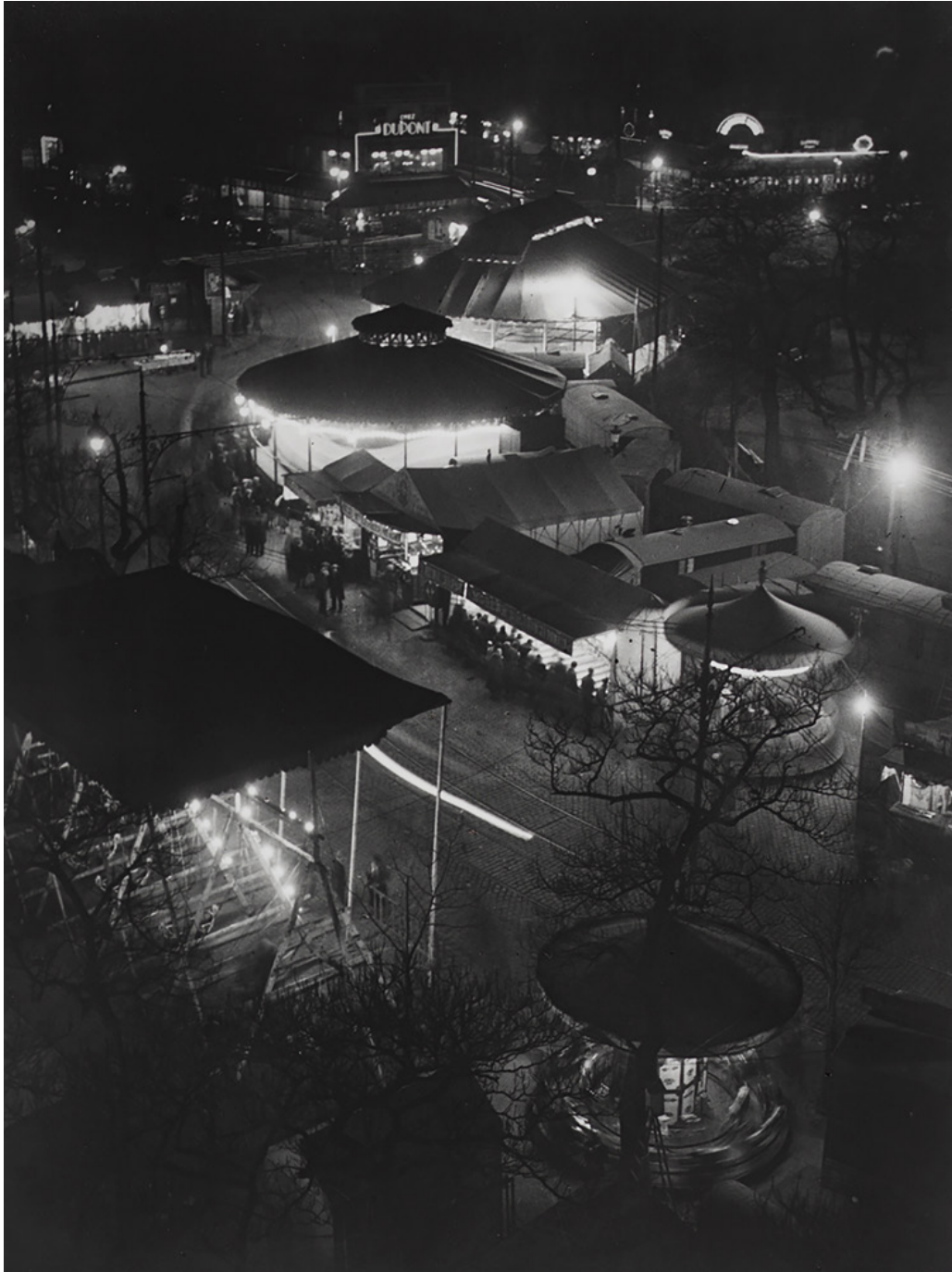
Photographed in Paris, 1932

Vintage print (pre-1970)

Ferrotypes gelatin silver print on single-weight paper

Image: 23.2 x 16.8 cm (9 1/8 x 6 5/8 in.)

Framed: 39.1 x 32.4 cm (15 3/8 x 12 3/4 in.)



La fête foraine, place d'Italie

Photographed in Paris, 1931

Vintage print (pre-1970)

Ferrotypé gelatin silver print on single-weight paper

Image: 25.4 x 21.6 cm (10 x 8 1/2 in.)

Framed: 41.3 x 37.1 cm (16 1/4 x 14 5/8 in.)



Le doyen de porters, Les Halles, Paris

Photographed in Paris, 1935

Vintage print (pre-1970)

Ferrotypes gelatin silver print on single-weight paper

Image: 28.9 x 21.3 cm (11 3/8 x 8 3/8 in.)

Framed: 43.8 x 35.6 cm (17 1/4 x 14 in.)



L'Academie Julian, rue du Dragon, 6e, Paris
Photographed in Paris, c. 1931-32
Print made c. 1975
Gelatin silver print on double-weight paper
Image: 36.8 x 27.3 cm (14 1/2 x 10 3/4 in.)
Framed: 52.7 x 42.5 cm (20 3/4 x 16 3/4 in.)



Kokoschka dans son jardin

Photographed in Paris, 1931

Print made c. 1975

Gelatin silver print on double-weight paper

Image: 25.4 x 36.8 cm (10 x 14 1/2 in.)

Framed: 50 x 52.1 cm (16 1/8 x 20 1/2 in.)



Mon premier portrait de Dalí

Photographed in Paris, c. 1932-33

Vintage print (pre-1970)

Ferrotypes gelatin silver print on single-weight paper

Image: 37.5 x 27.9 cm (14 3/4 x 11 in.)

Framed: 52.7 x 42.5 cm (20 3/4 x 16 3/4 in.)



Dalí et Gala dans leur studio Parisien, 14e, Paris

Photographed in Paris, c. 1932-33

Print made c. 1975

Gelatin silver print on double-weight paper

Image: 27 x 36.8 cm (10 5/8 x 14 1/2 in.)

Framed: 42.5 x 52.1 cm (16 3/4 x 20 1/2 in.)



Picasso au poêle, rue des Grands Augustins, 6e, Paris
Photographed in Paris, 1939
Print made c. 1975
Gelatin silver print on double-weight paper
Image: 37.5 x 27.9 cm (14 3/4 x 11 in.)
Framed: 52.7 x 42.5 cm (20 3/4 x 16 3/4 in.)



Braque au poêle, derrière, Le Billard, rue de Douanier

Photographed in Paris, 1946

Print made c. 1975

Gelatin silver print on double-weight paper

Image: 35.2 x 26.7 cm (13 7/8 x 10 1/2 in.)

Framed: 51.1 x 42.2 cm (20 1/8 x 16 5/8 in.)



Giacometti à la porte de son atelier, rue Hippolyte-Maindron

Photographed in Paris, 1947-48

Print made c. 1975

Gelatin silver print on double-weight paper

Image: 27.3 x 21.6 cm (10 3/4 x 8 1/2 in.)

Framed: 43.2 x 36.8 cm (17 x 14 1/2 in.)

Bill Brandt





Campden Hill, London, 1949

Print made c. 1975

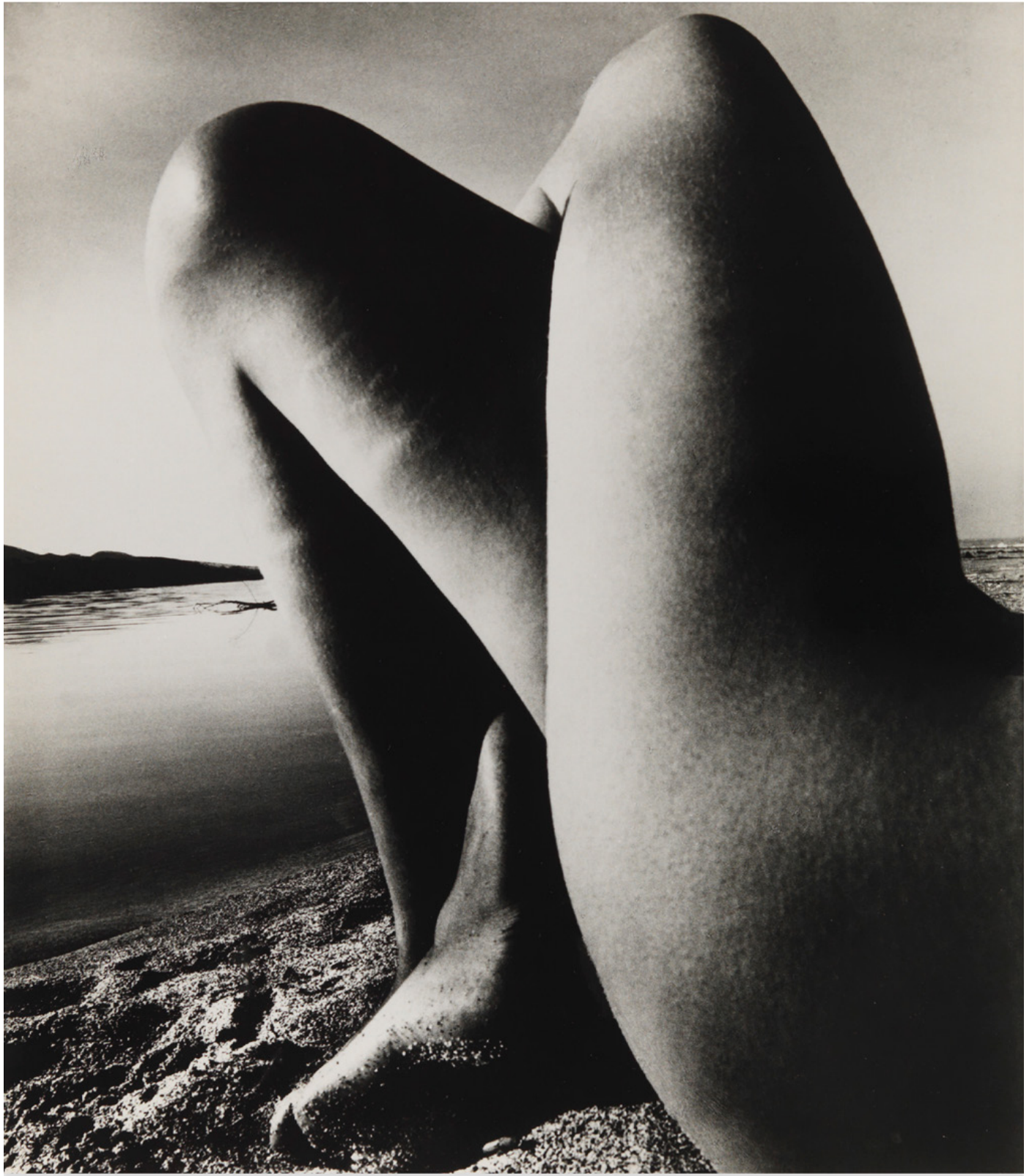
Gelatin silver print

Image: 34.3 x 29.2 cm (13 1/2 x 11 1/2 in.)

Framed: 52.4 x 42.5 cm (20 5/8 x 16 3/4 in.)



Campden Hill, London, April 1949
Print made c. 1975
Gelatin silver print mounted on board
Image: 34.3 x 29.2 cm (13 1/2 x 11 1/2 in.)
Framed: 52.4 x 42.5 cm (20 5/8 x 16 3/4 in.)



St. Cyprien, France, October 1951
Print made c. 1975
Gelatin silver print
Image: 33.3 x 29.5 cm (13 1/8 x 11 5/8 in.)
Framed: 52.4 x 42.5 cm (20 5/8 x 16 3/4 in.)



London, March 1952

Print made c. 1975

Gelatin silver print mounted on board

Image: 34.3 x 29.2 cm (13 1/2 x 11 1/2 in.)

Framed: 52.4 x 42.5 cm (20 5/8 x 16 3/4 in.)



Belgravia, London, February 1953
Print made c. 1975
Gelatin silver print mounted on board
Image: 34.3 x 29.2 cm (13 1/2 x 11 1/2 in.)
Framed: 52.4 x 42.5 cm (20 5/8 x 16 3/4 in.)



Campden Hill, London, August 1953
Print made c. 1975
Gelatin silver print mounted on board
Image: 34 x 29.2 cm (13 3/8 x 11 1/2 in.)
Framed: 52.4 x 42.5 cm (20 5/8 x 16 3/4 in.)



East Sussex Coast, April 1953

Print made c. 1975

Gelatin silver print mounted on board

Image: 34.3 x 29.2 cm (13 1/2 x 11 1/2 in.)

Framed: 52.4 x 42.5 cm (20 5/8 x 16 3/4 in.)



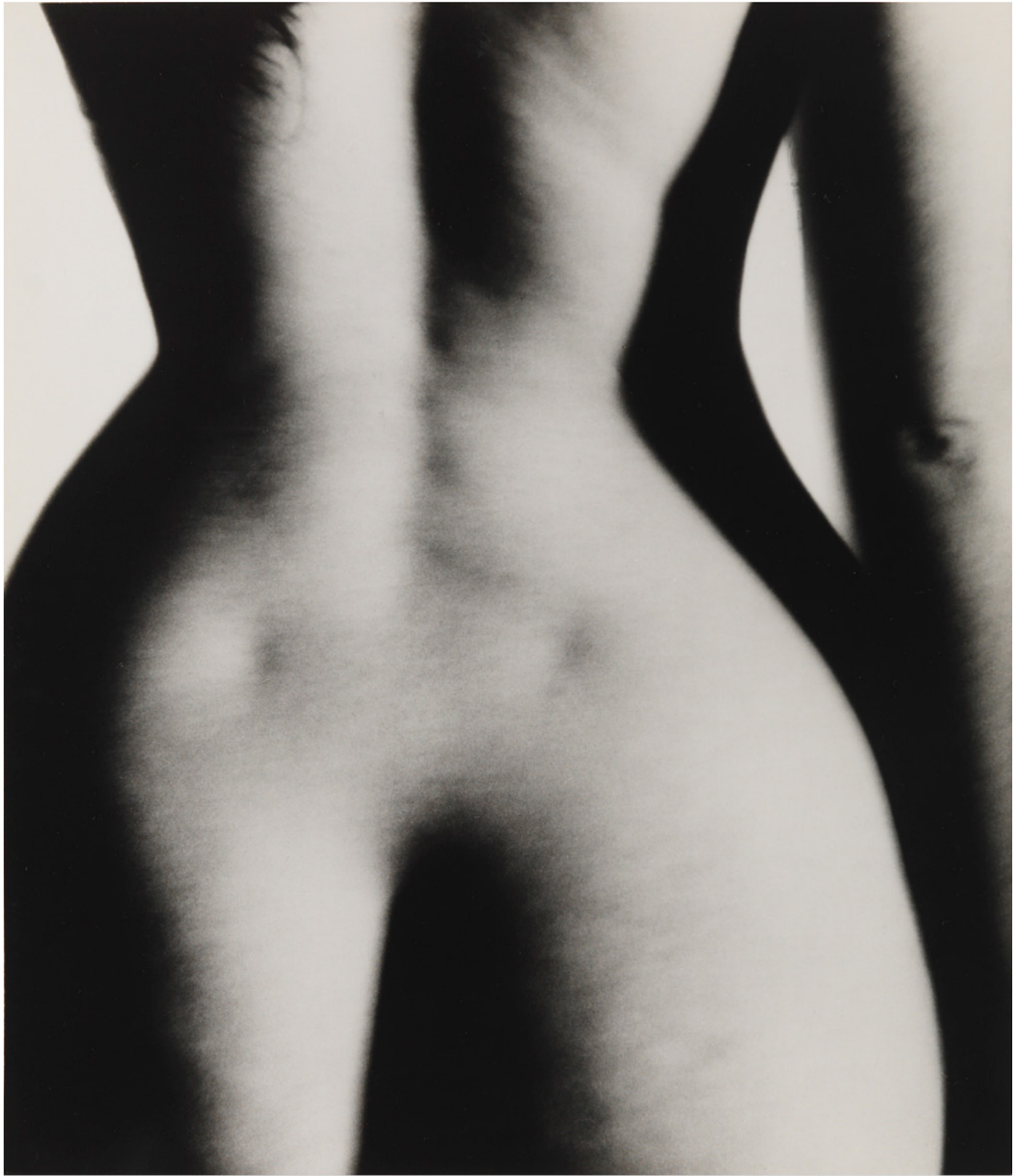
Nude, 1954

Print made c. 1975

Gelatin silver print mounted on board

Image: 33.7 x 28.6 cm (13 1/4 x 11 1/4 in.)

Framed: 52.4 x 42.5 cm (20 5/8 x 16 3/4 in.)



London, April 1956
Print made c. 1975
Gelatin silver print
Image: 34.3 x 29.2 cm (13 1/2 x 11 1/2 in.)
Framed: 52.4 x 42.5 cm (20 5/8 x 16 3/4 in.)



East Sussex Coast, 1957

Print made c. 1975

Gelatin silver print

Image: 34 x 28.9 cm (13 3/8 x 11 3/8 in.)

Framed: 52.4 x 42.5 cm (20 5/8 x 16 3/4 in.)



London, 1957

Print made c. 1975

Gelatin silver print mounted on board

Image: 34.3 x 28.9 cm (13 1/2 x 11 3/8 in.)

Framed: 52.4 x 42.5 cm (20 5/8 x 16 3/4 in.)



Vasterival Beach, Normandy, May 1957
Print made c. 1975
Gelatin silver print
Image: 34.6 x 29.5 cm (13 5/8 x 11 5/8 in.)
Framed: 52.4 x 42.5 cm (20 5/8 x 16 3/4 in.)



Belgravia, London, February 1958
Print made c. 1975
Gelatin silver print
Image: 34.3 x 29.2 cm (13 1/2 x 11 1/2 in.)
Framed: 52.4 x 42.5 cm (20 5/8 x 16 3/4 in.)



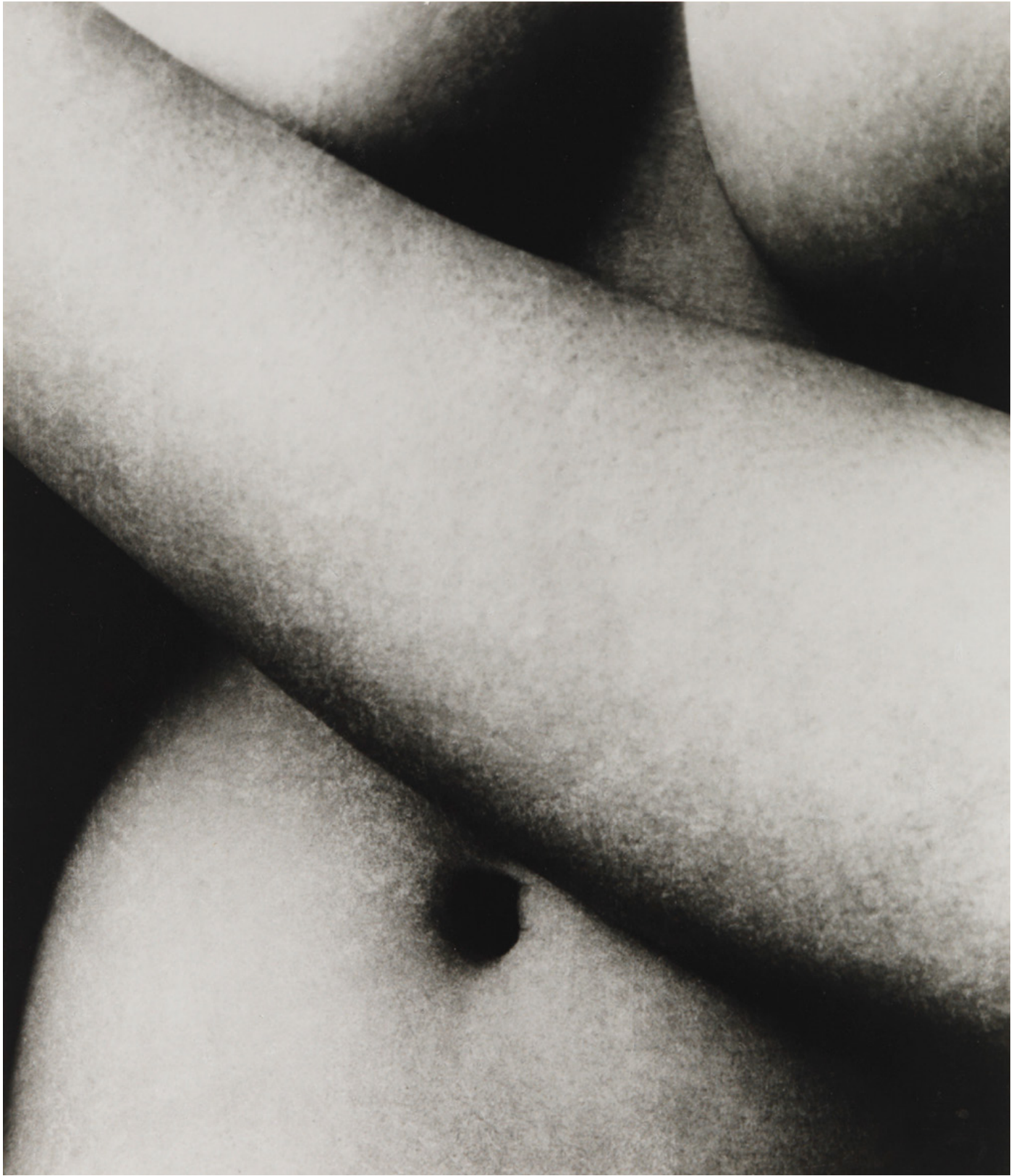
London, 1958

Print made c. 1975

Gelatin silver print mounted on board

Image: 34.3 x 29.2 cm (13 1/2 x 11 1/2 in.)

Framed: 52.4 x 42.5 cm (20 5/8 x 16 3/4 in.)



London, March 1958

Print made c. 1975

Gelatin silver print mounted on board

Image: 34.3 x 28.9 cm (13 1/2 x 11 3/8 in.)

Framed: 52.4 x 42.5 cm (20 5/8 x 16 3/4 in.)



East Sussex Coast, 1960

Print made c. 1975

Gelatin silver print mounted on board

Image: 34.3 x 29.2 cm (13 1/2 x 11 1/2 in.)

Framed: 52.4 x 42.5 cm (20 5/8 x 16 3/4 in.)



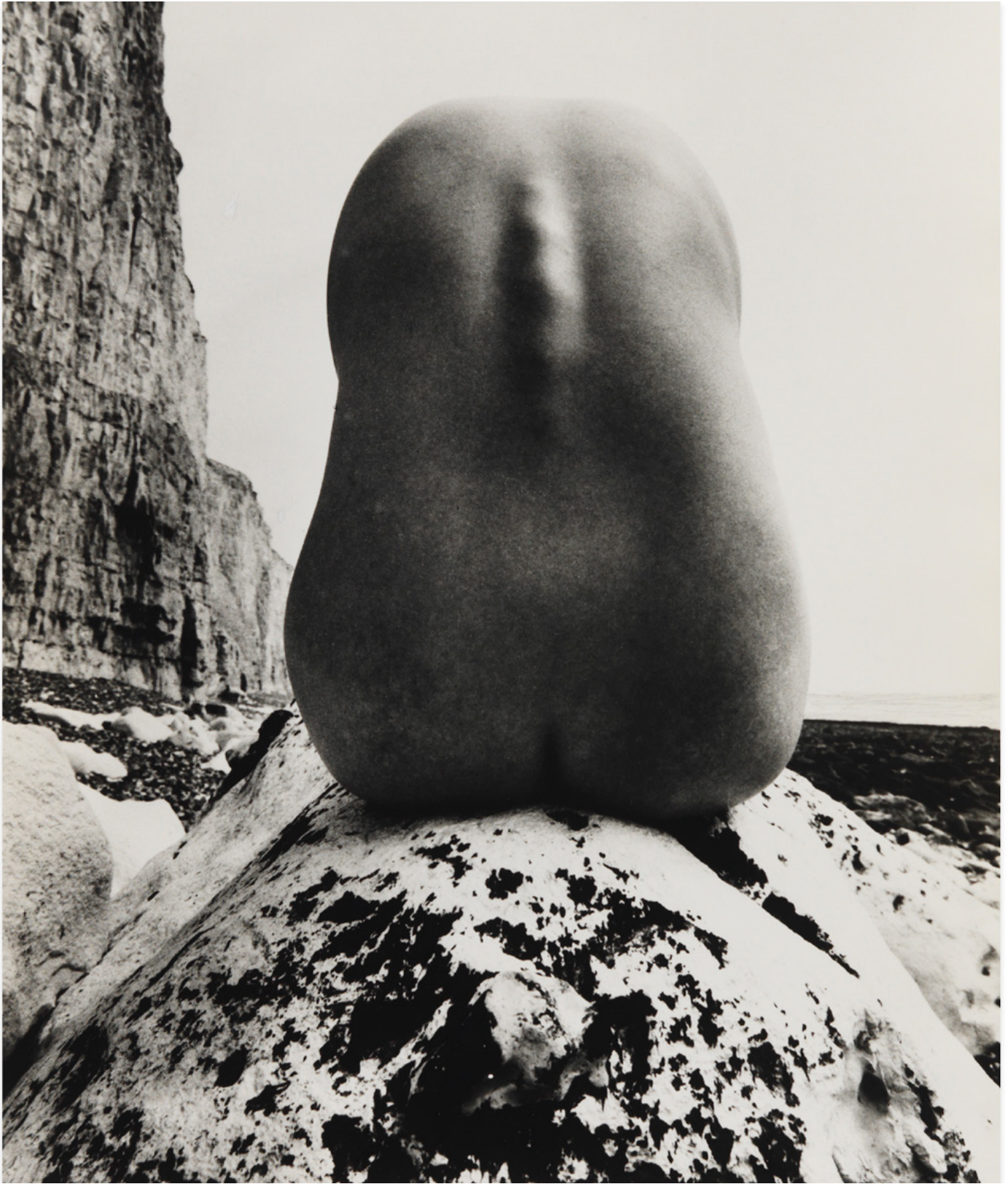
East Sussex Coast, 1960

Print made c. 1975

Gelatin silver print mounted on board

Image: 34 x 28.6 cm (13 3/8 x 11 1/4 in.)

Framed: 52.4 x 42.5 cm (20 5/8 x 16 3/4 in.)



East Sussex Coast, July 1977

Print made c. 1980

Gelatin silver print

Image: 34.3 x 29.2 cm (13 1/2 x 11 1/2 in.)

Framed: 52.4 x 42.5 cm (20 5/8 x 16 3/4 in.)



East Sussex Coast, 1979

Print made c. 1980

Gelatin silver print

Image: 34.3 x 29.2 cm (13 1/2 x 11 1/2 in.)

Framed: 52.4 x 42.5 cm (20 5/8 x 16 3/4 in.)



Hampstead, London, 26 February 1979
Print made c. 1980
Gelatin silver print
Image: 33.3 x 28.3 cm (13 1/8 x 11 1/8 in.)
Framed: 52.4 x 42.5 cm (20 5/8 x 16 3/4 in.)